



CSVLookup

version 4

Description

CSV Lookup allows a CSV (comma separated values) file to be used as a simple database to help simplify Switch flows. Instead of having to install and configure a database server, design tables, populate with data and write SQL queries, you can simply use a spreadsheet exported to CSV format.

CSV Lookup supports up to 15 "compare" values and up to 6 "lookup" values. Compare values specify which columns in the CSV should be used to locate a matching row. Once a match has been found, CSV Lookup retrieves the values in the "lookup" columns and stores them in the job's private data. These values can be easily retrieved by other elements in your flow using Switch variables.

Compatibility

Switch 2017 update 1 and later

The CSV Lookup app requires at least one input and one output connection. The output connection is a traffic light type. If the look-up succeeds, the job will be sent to the "Success" connections. Otherwise, it will be sent to the "Error" connections.

Flow elements properties

- CSV file
- path to the CSV file to be used as database
- Column delimiter
- character to be used to separate fields in a row. Default is "Automatic". Can be set to "comma", "semi-colon" or "tab", if desired.
- Compare columns
- names of the columns in the CSV file to be used for comparisons. If a column is not required, select "None".
- Lookup columns
- names of the columns in the CSV file to be used for look-ups. If a column is not required, select "None".

Outgoing connections properties

- none

Support information

If you have any questions on how to use CSV Lookup, please send an email to support@apago.com or call +1 770-619-1884.

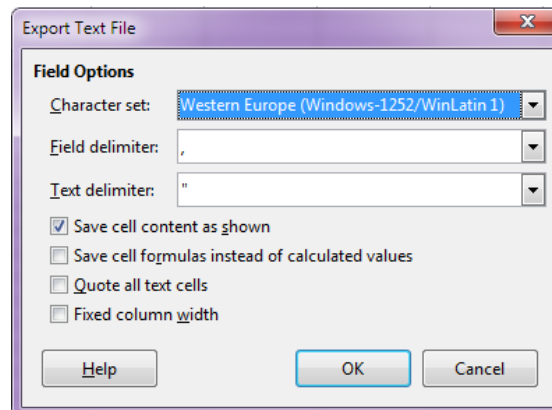
Tutorial

Goal: Select an imposition template using PDF file's trim size and page count

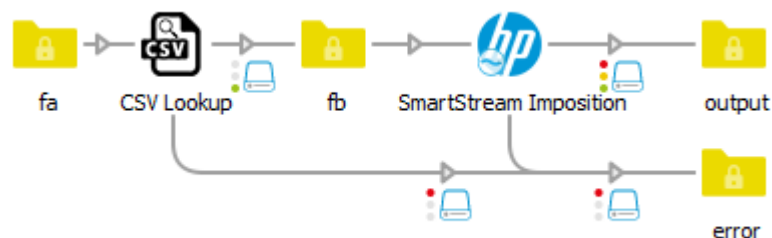
First we need to create a simple CSV that contains columns for the page width & height, page count and the imposition template name. You can use a spreadsheet program such as Excel or LibreCalc or just use a text editor. Make sure you include the names of each column in the first row.

	A	B	C	D
1	Width	Height	Count	Template
2	216	360	1	1sided_bizcards_h
3	360	216	1	1sided_bizcards_v
4	216	360	2	2sided_bizcards_h
5	360	216	2	2sided_bizcards_v
6	612	792	1	letter

Export the spreadsheet to CSV format. Use commas, semi-colons or tabs to delimit fields. Values that contain the delimiter character should be quoted. Here are the recommended settings:



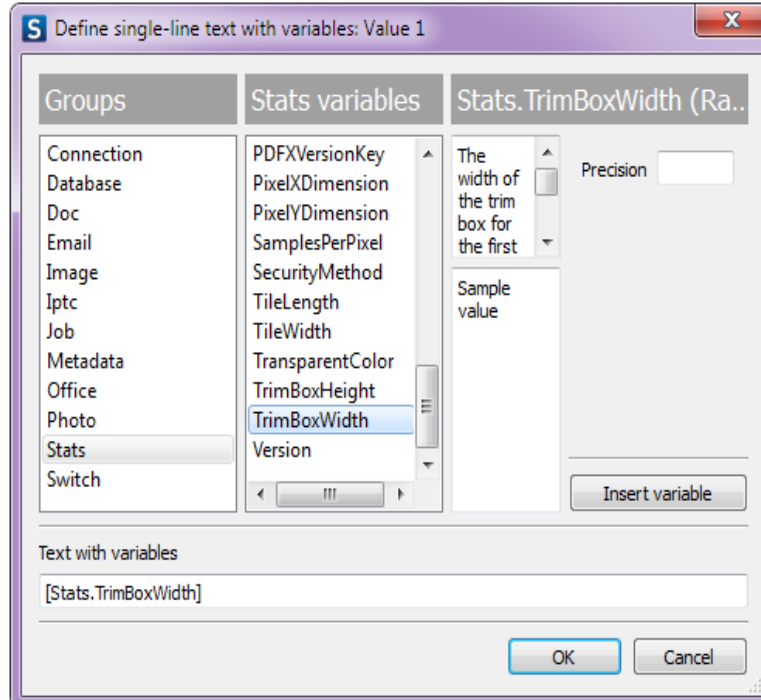
Next, create a flow containing CSV Lookup and your imposition program.



In the properties for CSV Lookup select the CSV file you want to use. Enter the names of the "Width", "Height" and "Count" columns for the "Compare 1", "Compare 2" and "Compare 3" properties and "Template" for "Lookup 1 column" property.

Property	Value
Name	CSV Lookup
Description	
CSV file	\\Data\templates.csv
Column delimiter	Automatic
Compare 1 column	Width
Value 1	
Compare 2 column	Height
Value 2	
Compare 3 column	Count
Value 3	
Lookup 1 column	Template
Private data key 1	
Lookup 2 column	None
Lookup 3 column	None
Lookup 4 column	None

Now we have to select where Switch should get the values that will be used for each comparison. In this example we will use Switch variables to retrieve the trim box width height and the number of pages from a PDF. For "Value 1" properties, which will be compared against the values in the "Width" column of the CSV, we select "Define single-line text with variables" and then "Stats" and "TrimBoxWidth".



Use the same steps to select the variables for "Value 2", [Stats.TrimBoxHeight] and "Value 3", [Stats.NumberOfPages].

CSV Lookup uses a feature of Switch called "private data" to store the values it retrieved from the CSV file. Private data is stored in a job's metadata and can be easily used later in the flow using Switch variables. Private data has a key, which is used to name it, and a value. For this example, set the "Private data key 1" to "template_name".

Compare 1 column	Width
Value 1	Single-line text with variab...
Compare 2 column	Height
Value 2	Single-line text with variab...
Compare 3 column	Count
Value 3	Single-line text with variab...
Lookup 1 column	Template
Private data key 1	template_name
Lookup 2 column	None
Lookup 3 column	None
Lookup 4 column	None

The final task is to change the imposition program's properties so it retrieves the name of the template. Select "Single-line text with variables" for "Imposition Template" property and then Job group and PrivateData variable. Enter "template_name" for the key.

