



What's new in Enfocuz Switch 2017

NEW FEATURES AND FUNCTIONALITY	2
<i>Switch is now 64-bit</i>	2
<i>The Switch Web Portal: Server Messages and Job Client in a browser</i>	2
<i>Web Services and the Web Services Module</i>	5
<i>SwitchProxy</i>	5
<i>Moving the Switch Application data root</i>	5
<i>Logging</i>	6
<i>Support for AppleScript and Automator</i>	7
<i>Important notice regarding the Adobe Configurators</i>	7
<i>Bug fixes</i>	7
SYSTEM REQUIREMENTS	7
<i>Switch Server</i>	7
<i>Supported operating systems Switch Server</i>	7



New features and functionality

Switch is now 64-bit

Switch 2017 is completely 64-bit meaning it will only run on 64-bit operating systems. This means that Switch will make more optimal use of your system's memory.

Important notice for users with a Database module:

Now that Switch runs as a 64-bit application it will no longer recognize 32-bit ODBC drivers and you will need to update your ODBC connections in your operating system.

The Switch Web Portal: Server Messages and Job Client in a browser.

Built, in part, on the success of the web-based Switch messages in Switch 13, we now introduce the Switch Web Portal.

The main new feature for the Web Portal in Switch 2017 is the Job Client. Users can now submit jobs to Submit points and route jobs from Checkpoints from within their browser. No need of installing any client-side software.

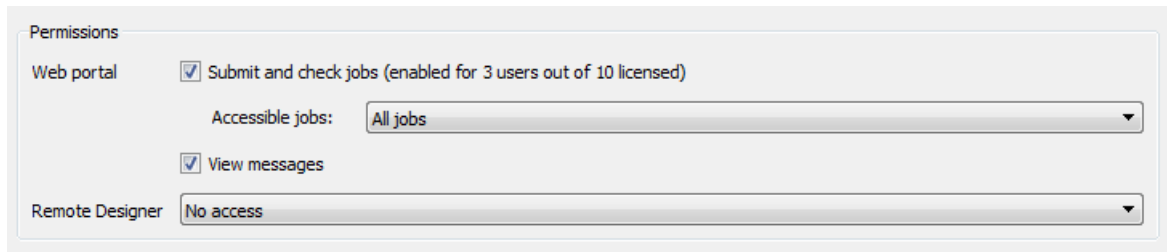
Backwards compatibility

As some features of the Job Client will only be added in Update releases it's important to understand that in some cases the Switch Web Portal might not yet support your workflow. In that case you can still use the Switch Client 13update1.

Features that will be released in updates:

- Downloading reports from Checkpoint
- Replacing jobs at Checkpoints
- Sorting on read-only metadata in Checkpoints.

User permissions and licensing



Permissions

Web portal Submit and check jobs (enabled for 3 users out of 10 licensed)

Accessible jobs: All jobs

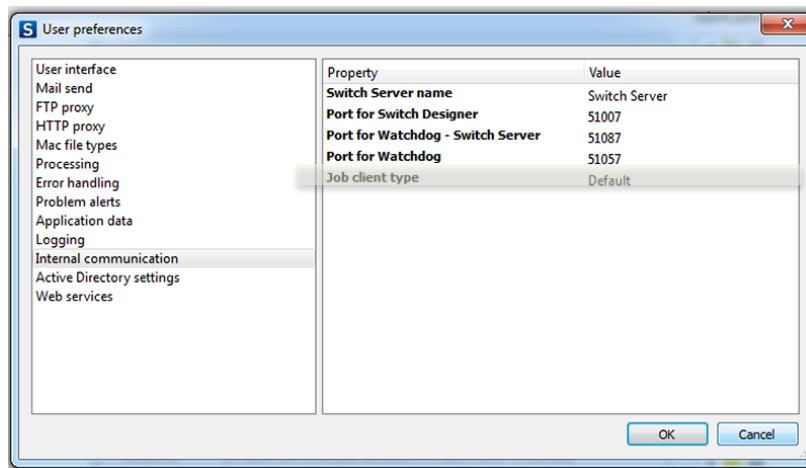
View messages

Remote Designer No access

When selecting a Switch User or Switch User Group you can give them the permission to view messages and/or submit and check jobs.

From Switch 2017 onwards Client licenses are counted per user and no longer per concurrent connection.

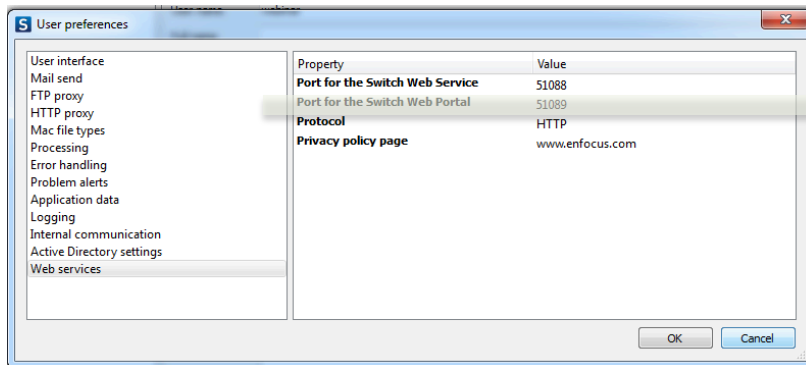
To make use of the new Job Client make sure to set the User preferences correctly.



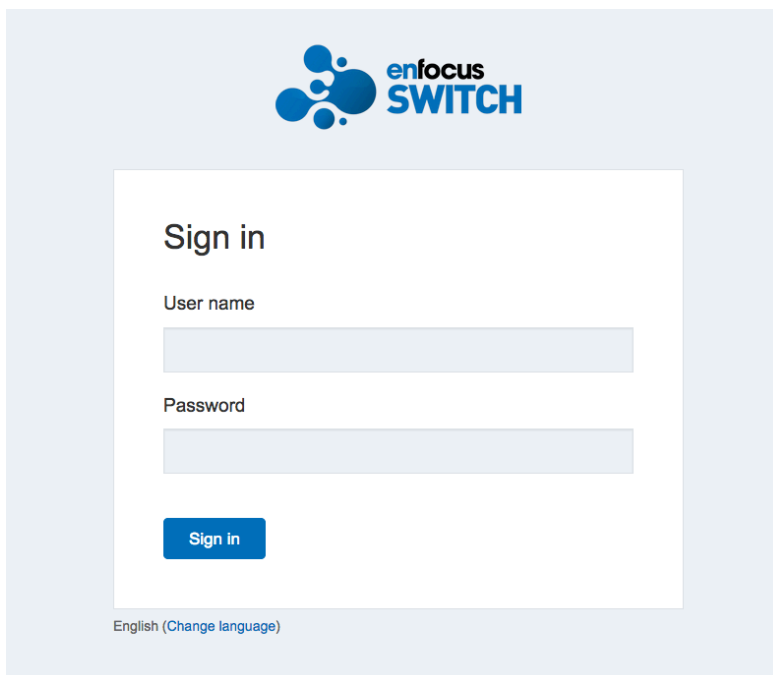
Property	Value
Switch Server name	Switch Server
Port for Switch Designer	51007
Port for Watchdog - Switch Server	51087
Port for Watchdog	51057
Job client type	Default

For upgrade installations the Job Client type preference is set to "legacy" by default. New installations will have "Default" selected, meaning the new Web Portal is used to submit and route jobs.

To access the Web Portal you need to know the IP address of the server or the hostname. You also need to know the Port number specified in the Web Services preferences in the Server preferences.



When browsing to the Switch Web Portal the following login screen is shown:



An Access denied error message is shown when:

- The user has no permissions to access either the messages or the job client in the Portal



- Username and/or password is wrong

Sign in

Access denied.

Web Services and the Web Services Module

The SwitchClient module comes with a documented REST API. This API can be accessed without a licensed Web Services module, although with some limitations.

Limits on API usage:

A limit on the amount of submitted or routed jobs. A warning message is logged when 90% of the limit is reached.

The API rate limit is set in place to block abuse of the SwitchClient module. The limit is set high enough to cover all internal Job Client usage.

Limit on API users:

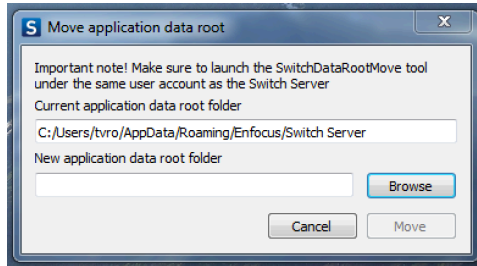
This is a limit on the amount of users that can submit and/or route files. Users should have permissions to access Submit and/or Checkpoints. The amount of users is limited by the amount of client user licenses.

SwitchProxy

Switch 2017 no longer offers an Enfocus Proxy module but does offer support for 3rd party proxies. Switch 2017 supports the use of HTTP proxies.

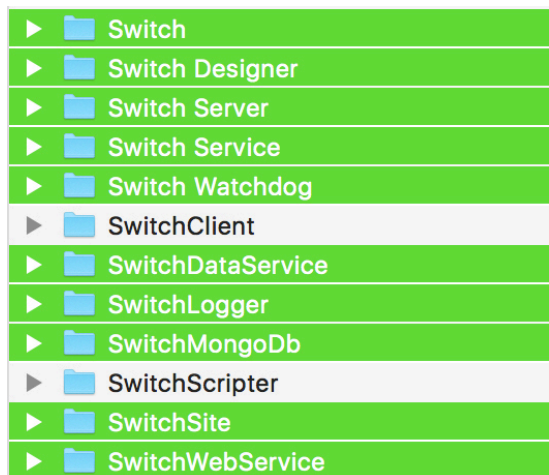
Moving the Switch Application data root

From Switch 2017 onwards a separate application is added to move the data root: SwitchDataRootMove. This application can be found in the installation folder of Switch. Make sure to quit all running Switch processes before moving the Data root.

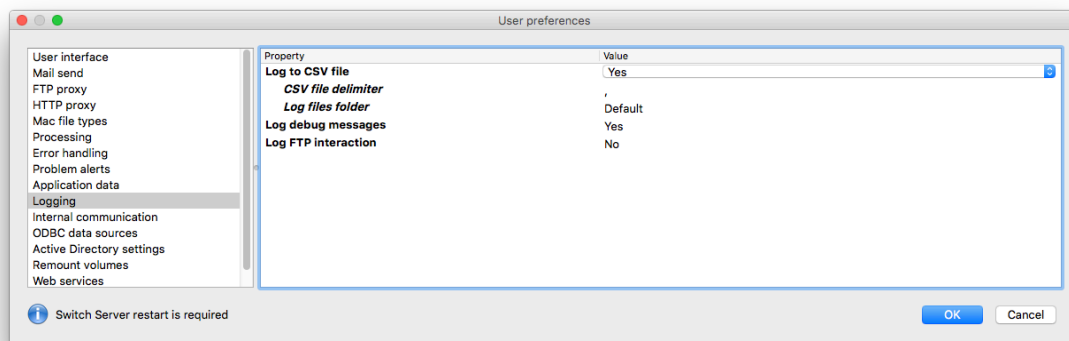


Logging

There are changes made in the way that Switch creates log files. Additional log files (.txt) are stored on the system for each separate Switch Process. These log files are stored in a subfolder for each process located in the Switch Application Data Root.



In the user preferences the log exports are now limited only to csv files and no longer support export to xml files.





Support for AppleScript and Automator

AppleScript is removed as an option in Switch Scripter. Creating Scripts in Applescript is still possible although a Switch Scripter with AppleScript support needs to be requested by contacting Enfocus Support.

Support for AppleScript is guaranteed at least until Switch 2018.

Support for the Automator configurator is also removed from Switch 2017.

Important notice regarding the Adobe Configurators

Switch 2017 no longer supports configurators for Adobe CS6 or older. Configurators for Adobe CC 2014 and upward are available through the Enfocus Pack Manager.

Added Configurators

Firstlogic DQ Workflow

Updated Configurators

Adobe Photoshop
Adobe Illustrator
Adobe InDesign

Bug fixes

See separate PDF file

System requirements

Switch Server

Dual Core (additional cores recommended depending on the use of 3rd party applications)
RAM 4GB (2 GB per Core recommended)

Supported operating systems Switch Server

32-bit operating systems are no longer supported from Switch 2017 onwards.



- Microsoft® Windows® 7 64-bit
- Microsoft® Windows® 8.1 64-bit
- Microsoft® Windows® 10 64-bit
- Microsoft® Windows® 2012 Server 64-bit

Microsoft® Windows® 2012 Server R2 64-bit

- Microsoft® Windows® 2016 Server 64-bit
- Virtual Machines (VMWare, Hyper-V) 64-bit

- Mac OS® X 10.10
- Mac OS® X 10.11
- Mac OS® X 10.12
- MAC Server

- Note: OSX Server is an app for the regular OSX version; hence it is not considered a separate OS. If the base OSX version is supported, then the base OSX version including the OSX Server app is supported.