

Switch 2017 update 2

What's new in Switch 2017 update 2.

Authors Toon Van Rossum, Product Manager

Date 21/11/2016

TABLE OF CONTENTS

1. Introduction	3
1.1. Before installing	3
2. macOS High Sierra Support	4
3. Browser Support	4
4. User Experience and UI Improvements	5
4.1. Web Portal	5
Scalable metadata entry dialog	5
Improved readability of outgoing connections in Checkpoints	6
Support for multiline data entries	7
New contextual menu	7
4.2. Switch Designer	8
Double-click to add folders on the canvas	8
Keyboard shortcuts for elements in the Favorites category	8
4.3. Color picker for Folders and Connections	9
4.4. Testing Mail send preferences	9
Auto-saving flows	10
4.5. JSON support in JavaScript	10
4.6. HTTP HEAD method requests	11
5. Improved Installation and Update of Configurators	11
6. Bug Fixes	13

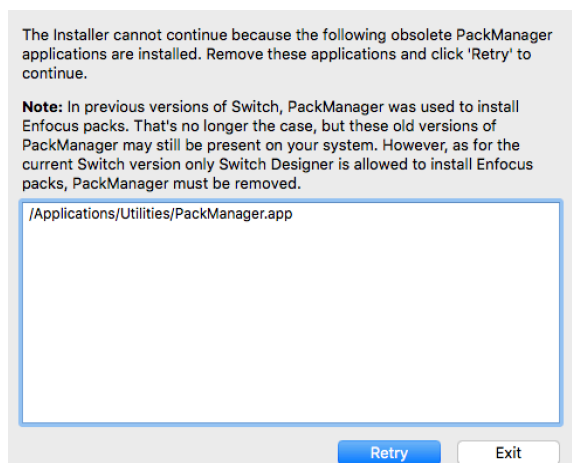
1. Introduction

Switch 2017 update 2 is a free update for maintenance customers, offering additional features, bug fixes, and UI/UX improvements based on the feedback from our users.

1.1. Before installing

Switch 2017 update 2 comes with an updated PackManager to provide an improved installation and update process for configurators.

Note: Because of security reasons the Switch installer cannot remove or update certain old versions of PackManager and a manual uninstall is required. If these old PackManager versions are detected on the system, a warning is shown during installation.



How to uninstall PackManager on Windows:

- Windows 10:

<https://support.microsoft.com/en-us/help/4028054/windows-repair-or-remove-programs-in-windows-10>

- Windows 7:

<https://support.microsoft.com/en-us/help/2601726>

How to uninstall PackManager on Mac:

1. Open the location shown in the warning dialog in Finder.
2. Move PackManager.app to the Trash.
3. Empty the Trash.

2. macOS High Sierra Support

Switch 2017 update 2 officially supports macOS 10.13 (High Sierra).

3. Browser Support

The Web Portal supports all major browsers:

Chrome
Firefox
Edge
Safari

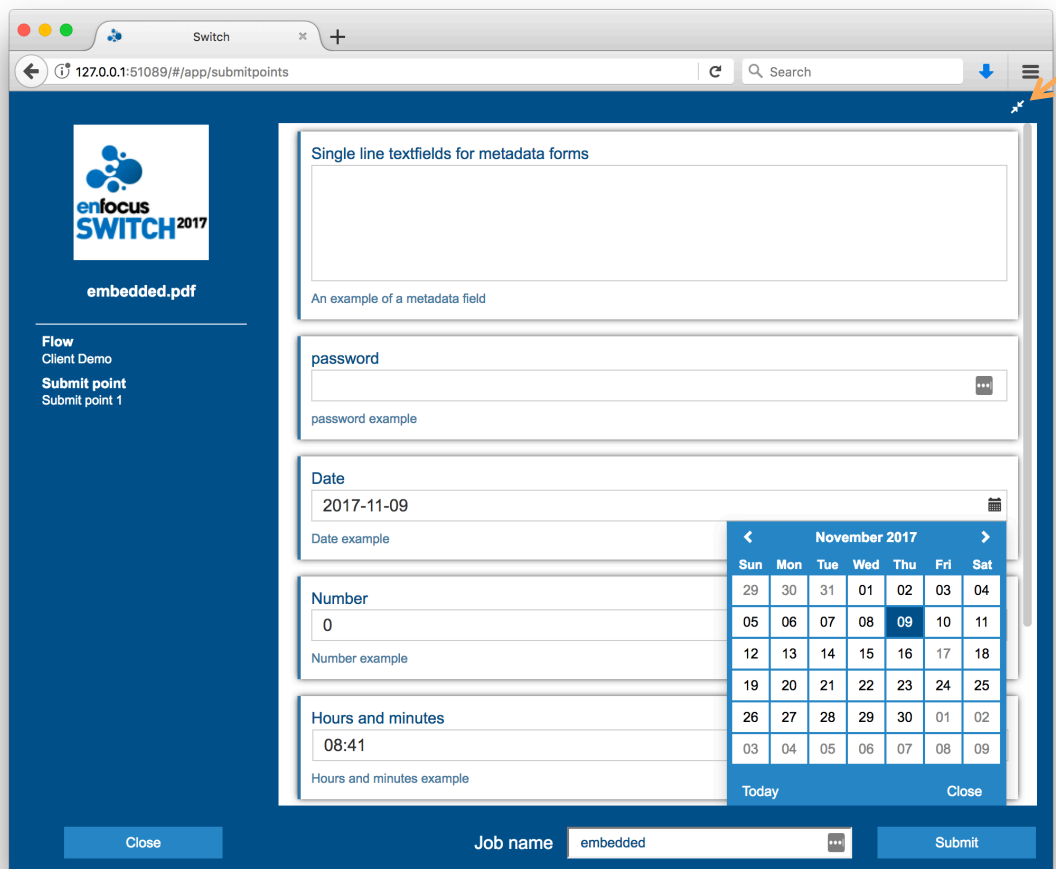


4. User Experience and UI Improvements

4.1. Web Portal

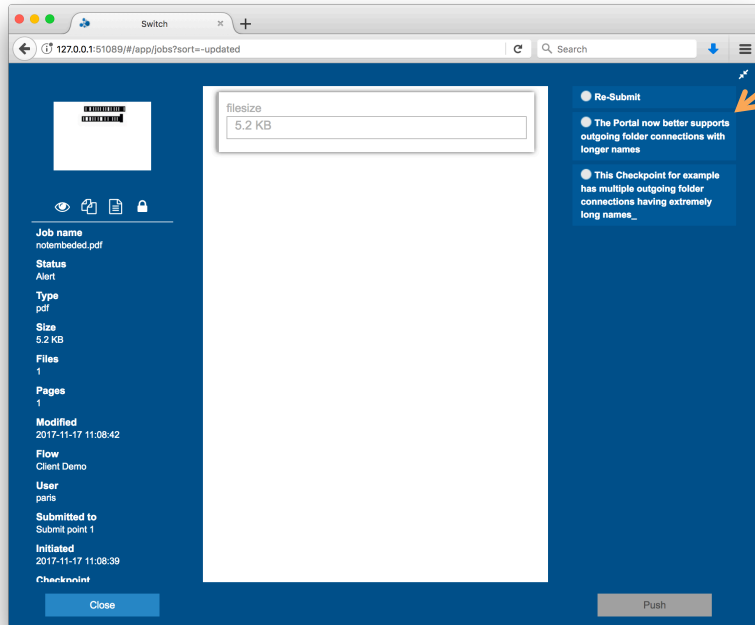
Scalable metadata entry dialog

The Submit Job dialog and the Check Job dialog have been redesigned to better support large metadata forms. By clicking **the arrows in the top right corner** the dialog now scales to use the entire browser window.

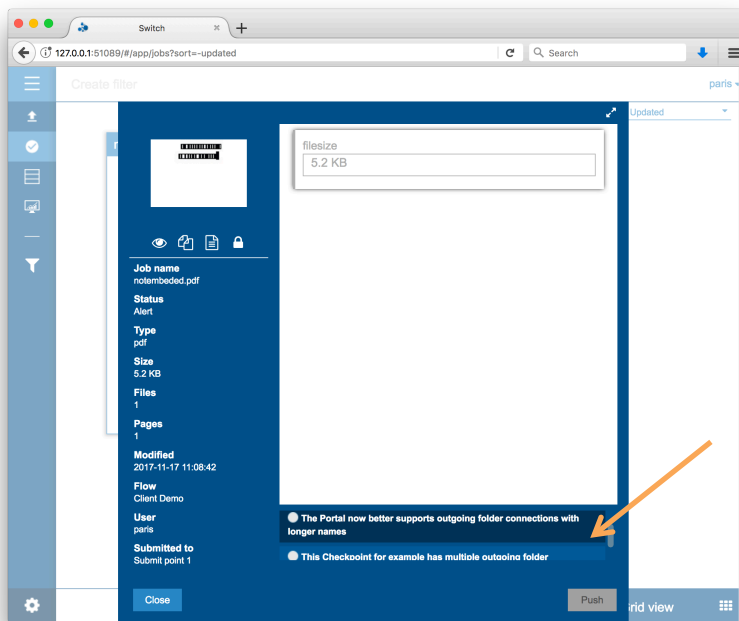


Improved readability of outgoing connections in Checkpoints

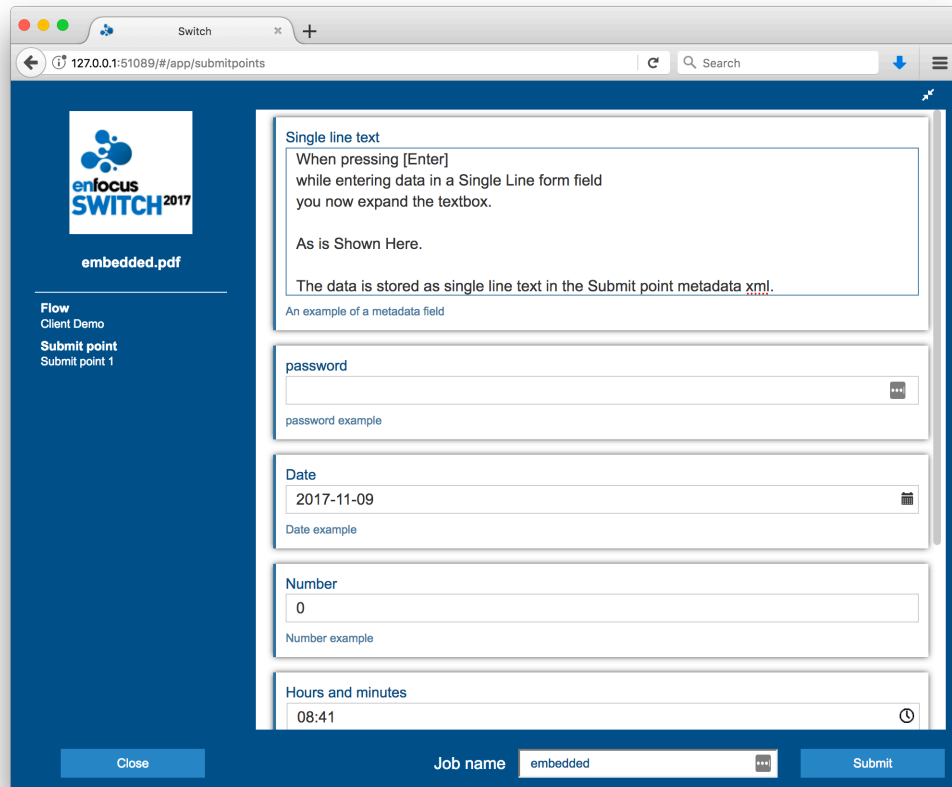
Maximized:



Minimized:



Support for multiline data entries



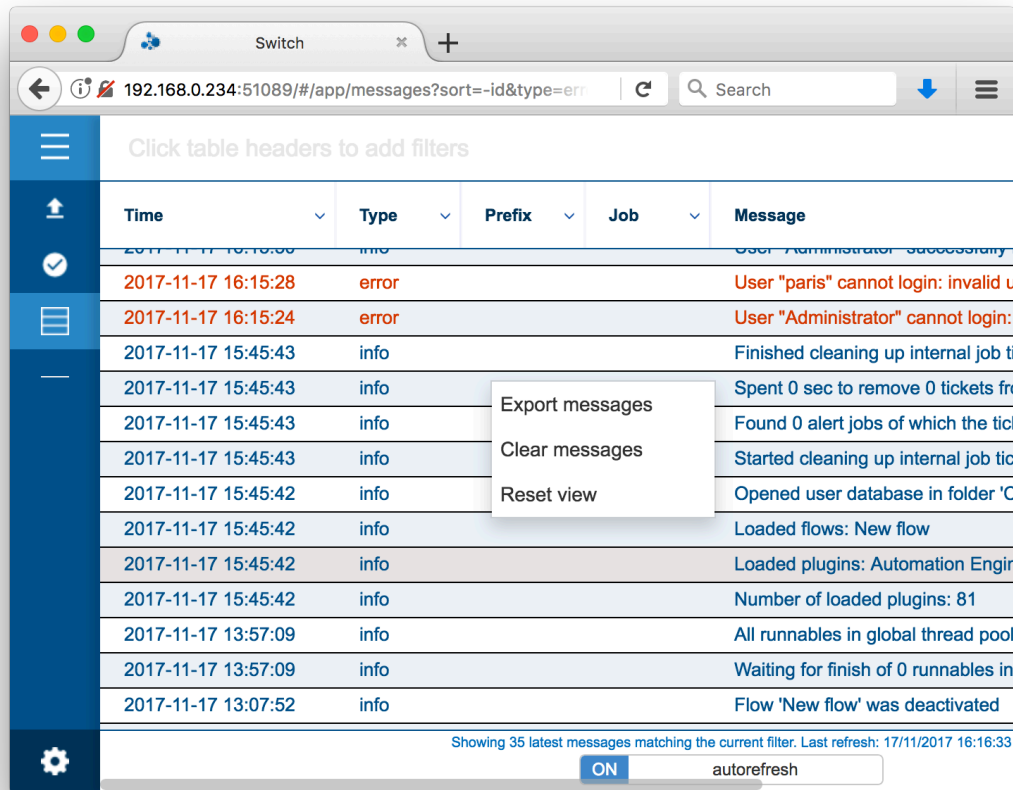
The screenshot shows a web browser window with the URL `127.0.0.1:51089/#/app/submitpoints`. The page features a blue sidebar on the left with the "enfocus SWITCH 2017" logo and a navigation menu containing "Flow", "Client Demo", "Submit point", and "Submit point 1". The main content area displays a form with several input fields:

- Single line text:** A text area containing the text: "When pressing [Enter] while entering data in a Single Line form field you now expand the textbox. As is Shown Here. The data is stored as single line text in the Submit point metadata xml. An example of a metadata field".
- password:** A password input field with a masked value "password example".
- Date:** A date input field with the value "2017-11-09" and a calendar icon.
- Number:** A number input field with the value "0".
- Hours and minutes:** A time input field with the value "08:41" and a clock icon.

At the bottom of the form, there is a "Job name" field with the value "embedded" and a "Submit" button. A "Close" button is also visible in the bottom left corner of the form area.

New contextual menu

A contextual menu (right-click) gives easy access to features in the Messages view.

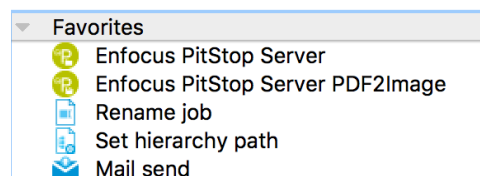


4.2. Switch Designer

Double-click to add folders on the canvas

A new folder can be added by double-clicking anywhere in the canvas.

Keyboard shortcuts for elements in the Favorites category



Elements in the Favorites category of the Flow elements pane can be added on the canvas by using the following keyboard shortcuts:

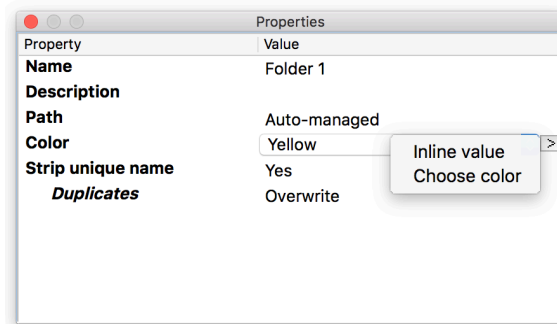
Mac: cmd + [number 1-9]

Windows: CTRL + [number 1-9]

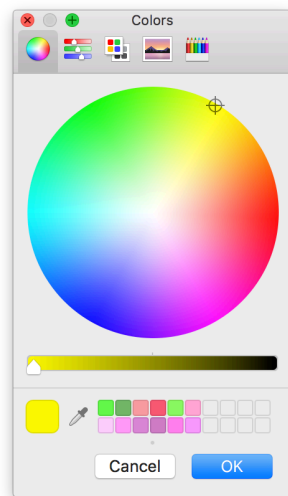
The elements added using the keyboard shortcuts will be placed in the middle of the canvas.

4.3. Color picker for Folders and Connections

A new editor “Choose Color” is added to the Color preference for both folders and connections:

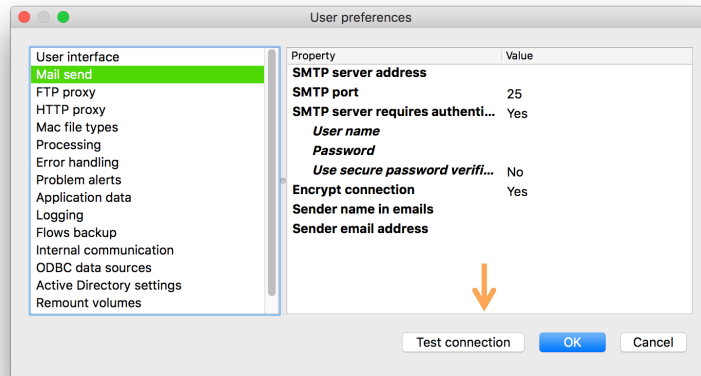


“Choose color” will bring up a Color Picker.



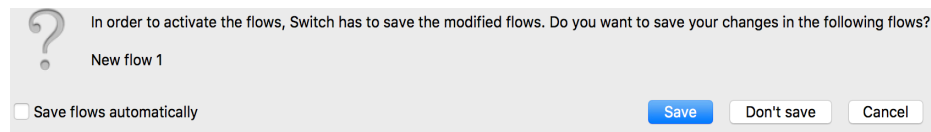
4.4. Testing Mail send preferences

You can now check if your Mail send preferences were configured correctly by clicking the new “Test connection” button.



Auto-saving flows

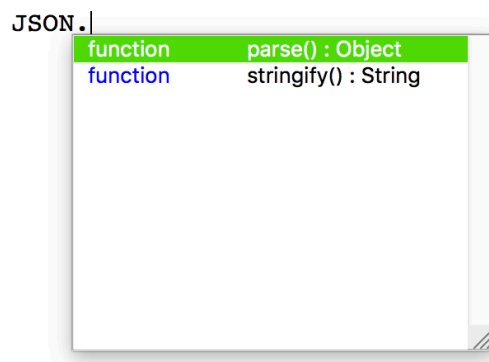
You can now choose to automatically save flows on flow startup.



Property	Value
Designer language	English
Large icons in elements pane	No
Save flows automatically	No
Start Switch Server automatic...	Yes
Show messages in Designer (b...	No

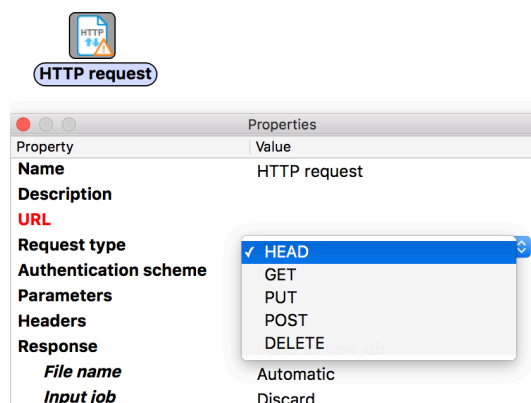
4.5. JSON support in JavaScript

Script writers can now use JSON.stringify() and JSON.Parse()



4.6. HTTP HEAD method requests

Both the HTTP request tool and the JavaScript API now support requests of the type HEAD.



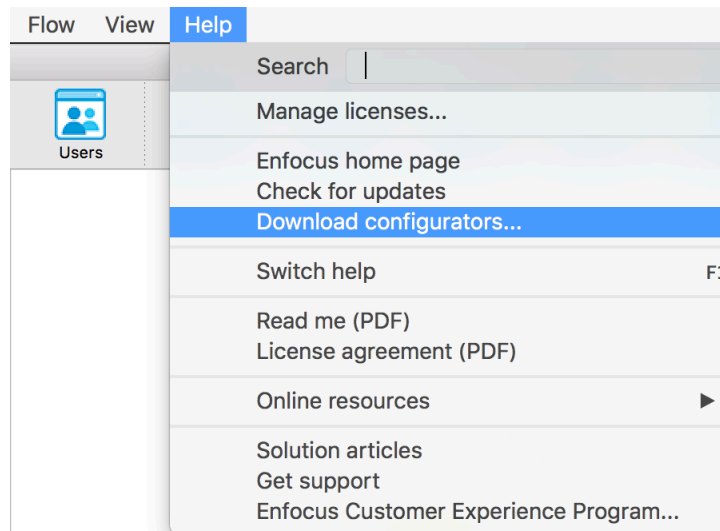
```
function post()
function put()
function head()
function get()
function del()
```

5. Improved Installation and Update of Configurators

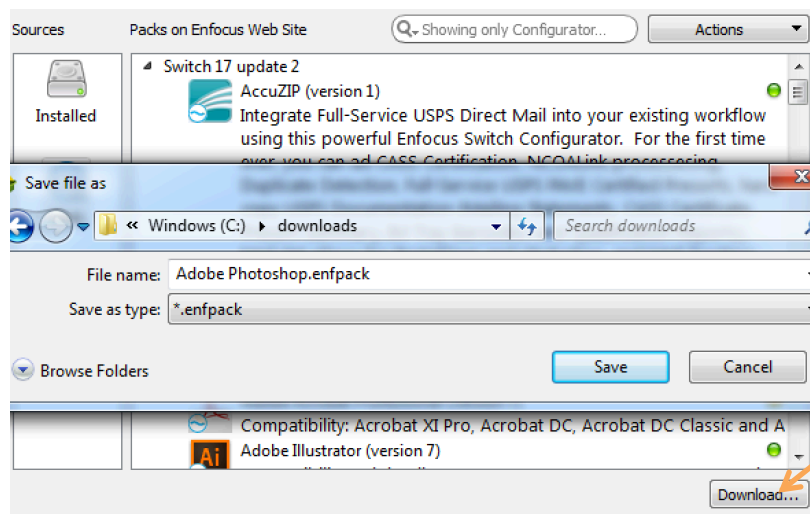
In previous Switch versions, you needed to restart Switch after the installation or update of a configurator. From Switch 2017 update 2 onwards this is no longer needed.

When updating a configurator that is currently used by a running flow, the flow will be stopped and restarted automatically.

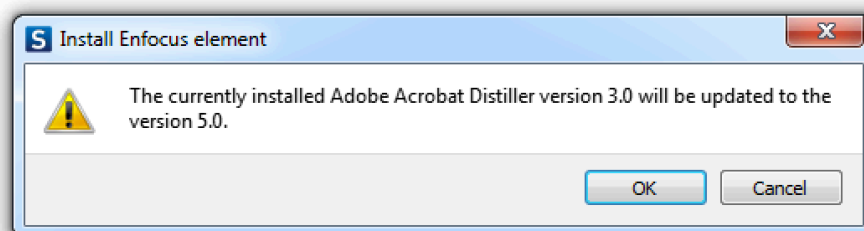
PackManager is still used to browse and download configurators.



The Download button at the bottom of the windows allows you to download the configurators.



When the download is finished, double-click the *.enfpack file to install it.



Switch will automatically stop and restart the flows that use this configurator.

6. Bug Fixes

ENFS-14544	Documentation update of the HTTP scripting class: how to work with cookies.
ENFS-14309	Not requiring username / password for ODBC data source
ENFS-14091	QSA threading errors while calculating variables
ENFS-13866	hasarrived() doesn't work for files bigger then 4 GB on an AFP share
ENFS-13847	Crash because of stress on mongodb
ENFS-13748	"Please wait... Switch is completing the task you requested" constantly
ENFS-13689	Mail not working for a specific mailservers
ENFS-13567	Condition operator is not remembered when using French as Designer language
ENFS-13514	e.copy returning a Number not a Boolean
ENFS-13479	Filename is stored differently when job is coming from a submit point
ENFS-13465	Switch Scripting documentation: Using OAuth Authorization Scheme
ENFS-13432	Long tickets cleanup blocks Designer
ENFS-13406	Pack Job doesn't escape two & characters correctly
ENFS-13372	Web Client shows check mark when file is not uploaded
ENFS-13343	Jobs aren't cleaned when job type is set to Legacy
ENFS-13269	job.getNameProper results stop at first "." in a folder name
ENFS-13065	Metadata Field stopping Web Portal from processing
ENFS-12835	Files with a % in the name can't be dragged and dropped via Designer on Mac
ENFS-12818	Problem with loading the script element
ENFS-12800	Time remaining in the Switch Designer copy dialog is not filled in
ENFS-12701	An empty "To Addresses" field in the Mail Send is not accepted if "Include attached addresses" is set to Yes
ENFS-12686	Mail Receive issue with special characters
ENFS-12584	Safari Web Portal issues.
ENFS-10709	Glitches in flow elements pane
ENFS-10498	Undesired normalization of XMP metadata
ENFS-10484	Actions which are done when a job arrives in a folder are serialized when they shouldn't
ENFS-9560	Issues with simultaneous connections to SFTP server
ENFS-9399	Switch 13.1 HTTP class and REST via https protocol
ENFS-7465	hold on a connection doesn't hold the FTP retry mechanism
ENFS-6899	Documentation update: ByteArray digital signature